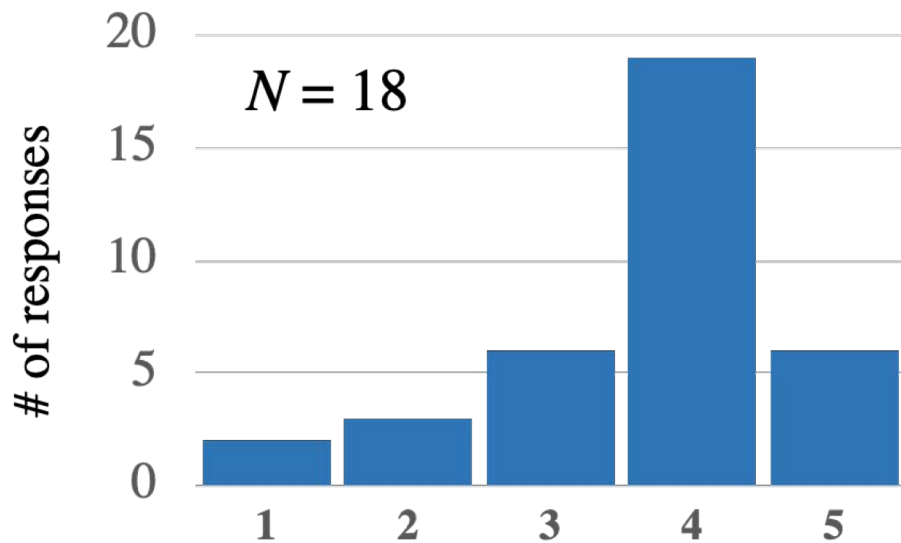


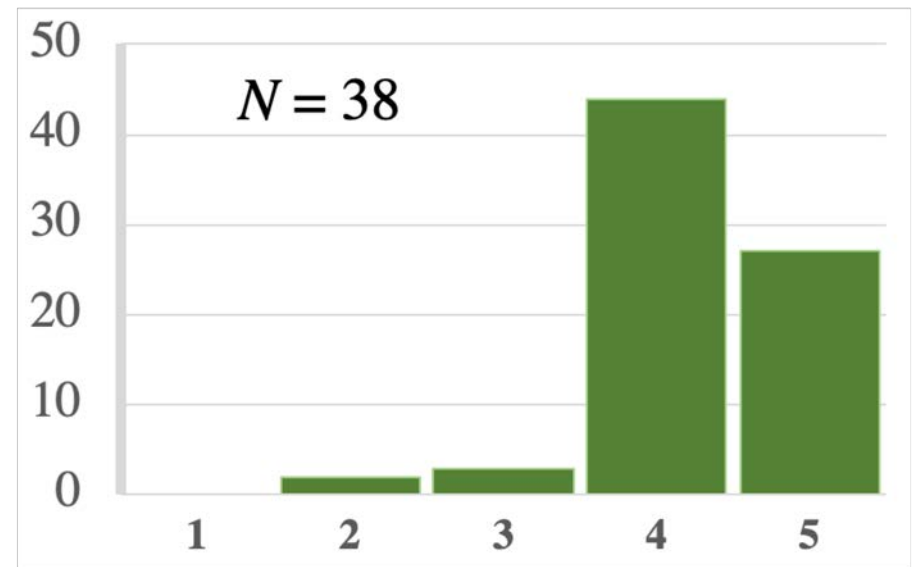
Attitudes about relevance of PHYSICS to biology after first semester

No IPLS physics yet



$$\mu = 3.7 \pm 0.2$$

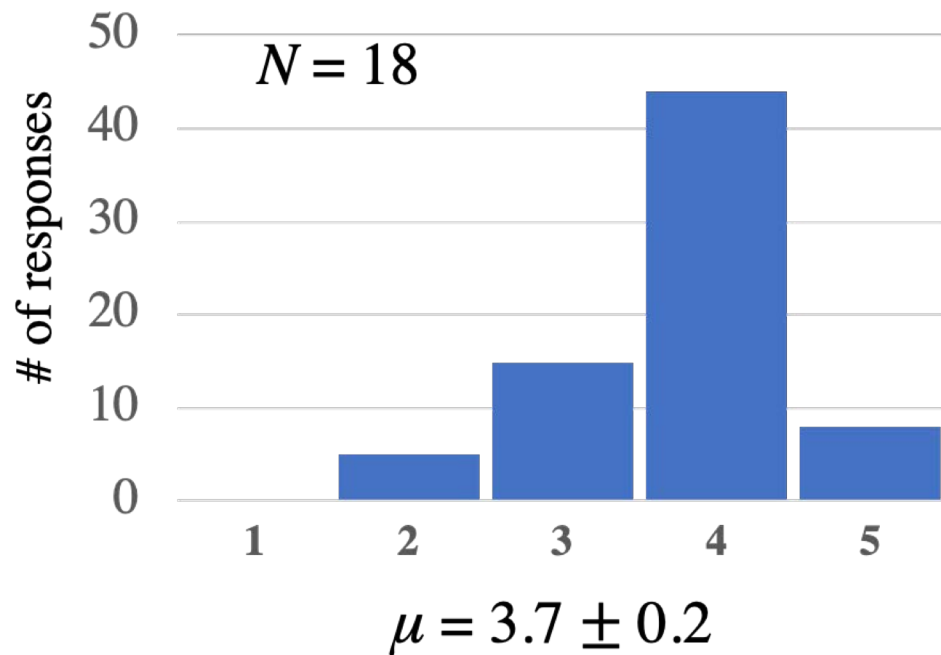
After 1 semester of IPLS



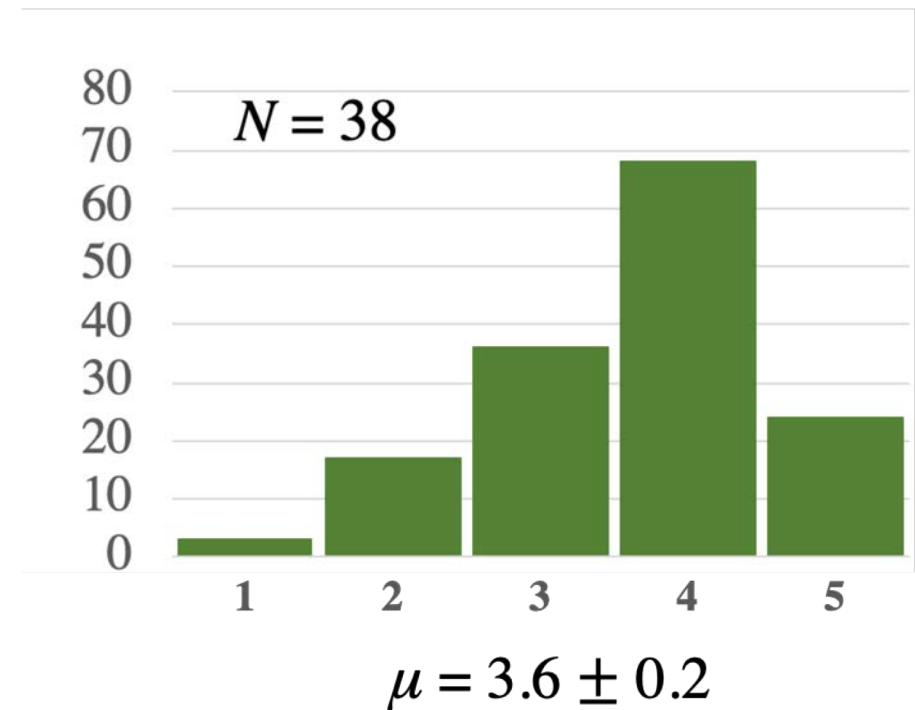
$$\mu = 4.3 \pm 0.1$$

Attitudes about relevance of MATH to biology after first semester

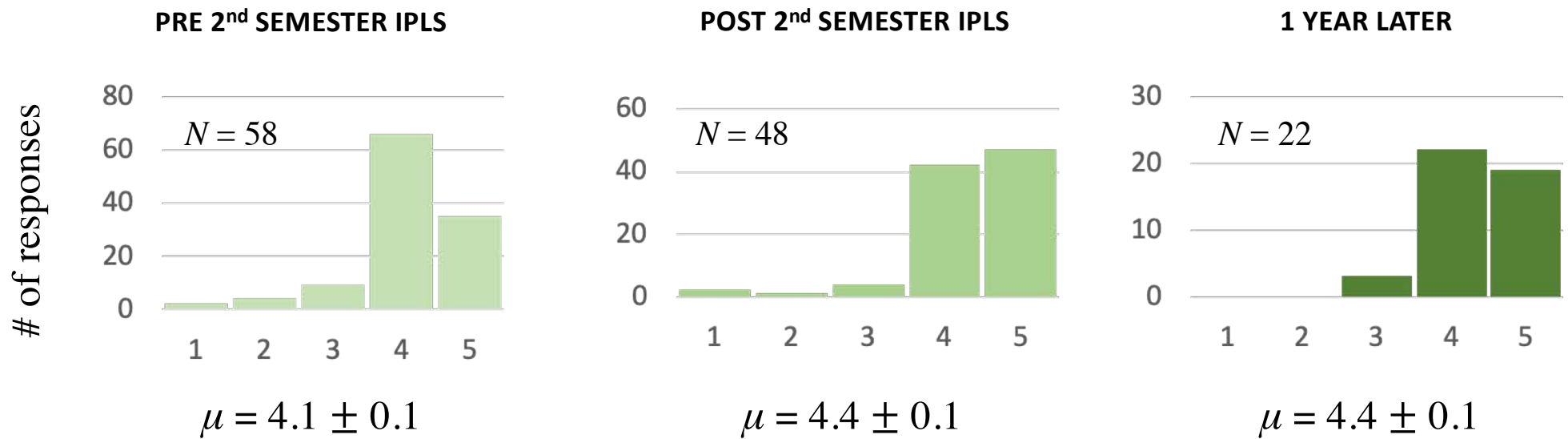
No IPLS physics yet



After 1 semester of IPLS



Attitudes about relevance of PHYSICS to biology: unmatched data



Attitudes about relevance of MATH to biology: unmatched data

